

Bencros BTC Tug Cylindrical Fenders are build for a long service in the harshest environment.

Found on working vessesl around the world, they are hard wearing and will protect hulls for decades.

We can manufacture the largest and longest Tug Cylindrical Fenders. Diameters of 1000mm or more, and individual lengths of more than 13 metres are easily joined to create fenders of more than 20 metres long.

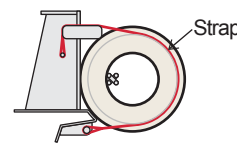
Constructed on a mandrel, Tug Cylindrical Fenders can be constructed with tapered ends and hot profiled grooves to suit webbing straps or sleeved chains.

Most tug builders prefer our wrapped cylindricals as they can be easily formed around the bow or stern, forming a neat joint between sections.

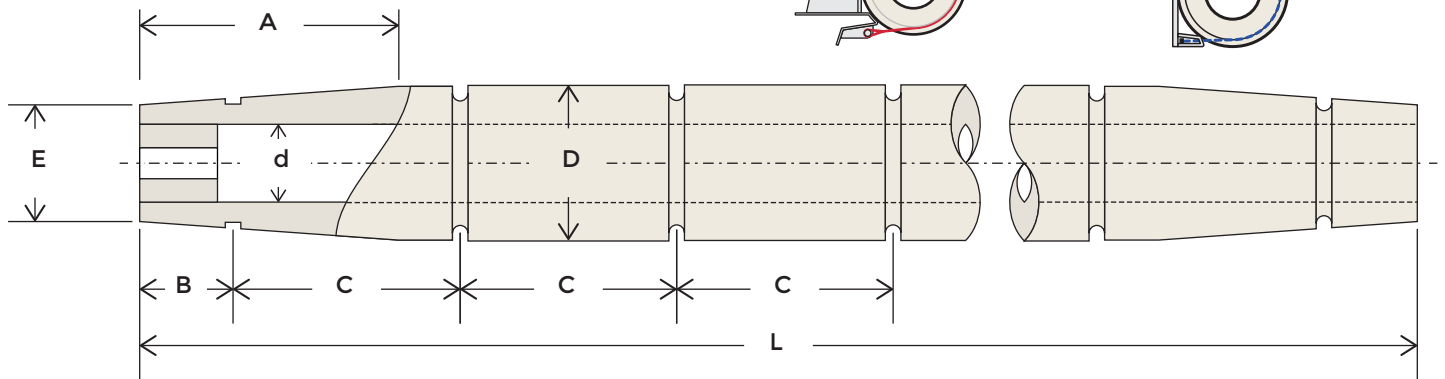
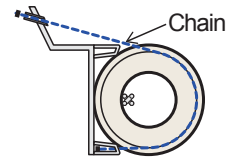
Tug Cylindrical Fenders are the ideal companion to the W-type (BTW), M-type (BTM) and Keyhole (BTK) fender range for bow and stern pushing areas.

Please discuss your project requirements with Bencros.

STRAP FIXING

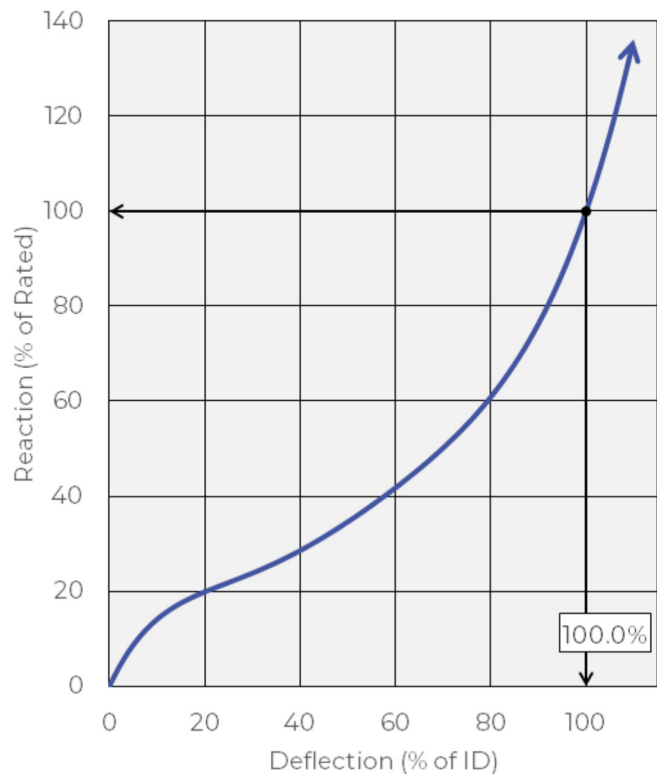


CHAIN FIXING



ØD	Ød	A	B	C	ØE
200	100-110	500	150	530	150
250	125-138	500	200	570	190
300	150-165	700	225	600	225
350	175-193	800	250	630	260
400	200-220	800	300	670	300
500	250-275	900	300	730	375
600	300-330	900	350	800	450
700	350-385	1000	350	860	525
800	400-440	1000	350	930	600
900	450-495	1100	350	1000	675
1000	500-550	1200	350	1060	750

ØD	Ød ₁ (=0.5D)	R ₁	Ød ₂ (=0.6D)	R ₂
200	100	110	120	87
250	125	138	150	109
300	150	165	180	131
350	175	193	210	152
400	200	220	240	174
500	250	275	300	218
600	300	330	360	261
700	350	385	420	305
800	400	440	480	348
900	450	495	540	392
1000	500	550	600	435



Performance tolerance is ±10%. Energy and reaction are per metre length and for Bencros C1 (standard) rubber grade. For special requirements and extra large diameters, please ask Bencros.