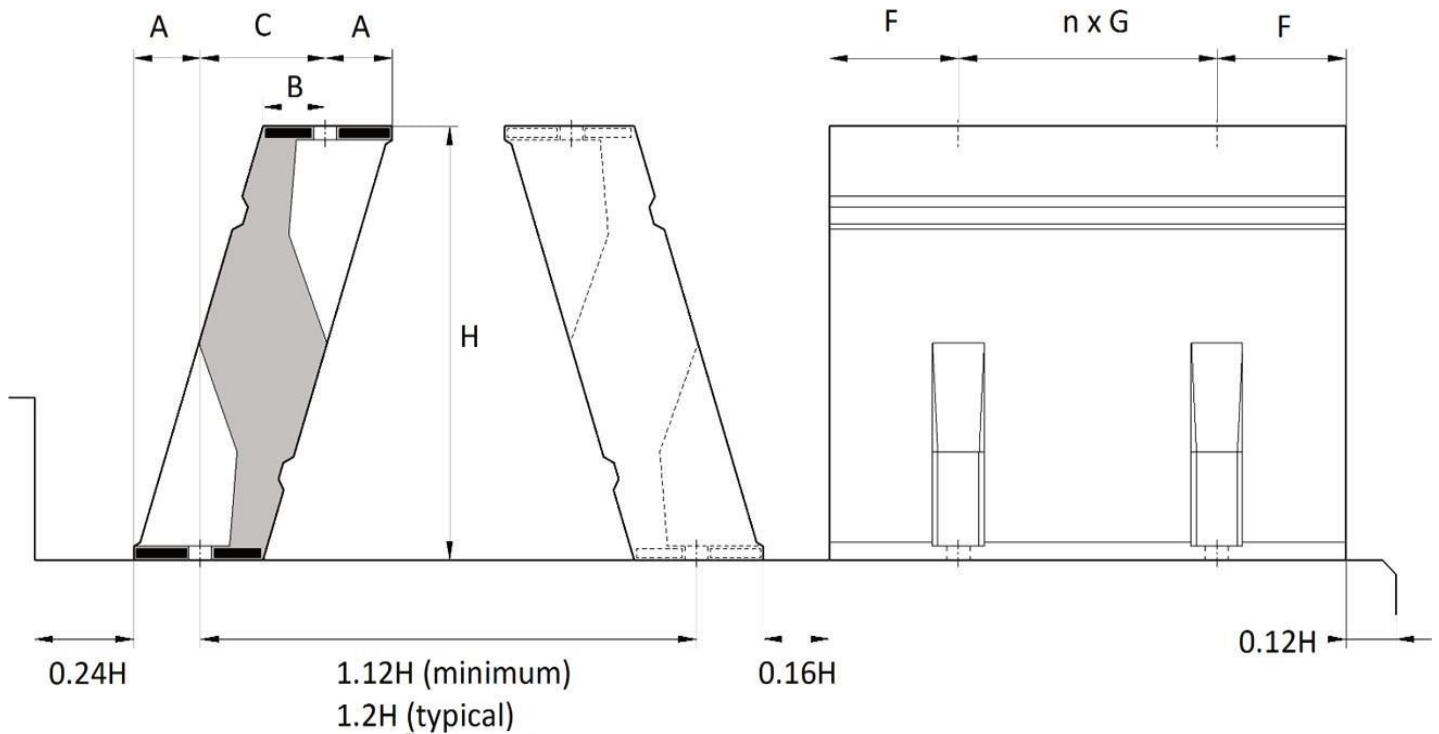


Bencros BME Element legs are compression moulded modular buckling column fenders with a high-performance geometry, internal steel mounting plates and concealed bolts.

BME Elements are simple to install and need very little maintenance. Many configurations

are possible: as a simple V-fender with UHMW-PE face shield or complex arrays in multiple fender systems using steel panels.

Standard and custom lengths are available in different rubber grades to suit most berth types and applications.



H	A	B	F	n x G	T	Fixings	Weight	L _{MIN}	600	900	1000	1200	1500	2000
250	40	40	F = 0.5 x [L - (n x G)]	300	17	M20	30	400	✓	✓		✓	✓	
300	47	47		400	17	M20	46	600	✓	✓		✓	✓	
400	63	62		500	17	M24	66	750			✓		✓	✓
500	87	71		500	20	M30	111	750			✓		✓	✓
550	87	85		500	20	M30	132	800			✓		✓	✓
600	87	101		500	20	M30	153	800			✓		✓	✓
700	113	112		500	26	M36	222	800			✓		✓	✓
750	118	117		500	26	M36	239	800			✓		✓	✓
800	129	121		500	26	M36	268	800			✓		✓	✓
900	145	144		500	31	M42	367	900			✓		✓	○
1000	162	160		500	31	M42	454	900		✓	✓		✓	○
1200	195	195		500	36	M48	625	900		✓	✓		✓	○
1250	202	199		500	36	M48	639	900			✓		✓	○
1400	220	220		500	41	M48	846	1000			✓		✓	○
1450	228	226		500	41	M48	873	1000			✓		✓	○
1600	261	246		500	50	M56	1114	1000			✓		✓	○

Dimensions are in millimetres. Weights are in kilogrammes per element, per metre. Cross sectional tolerance is $\pm 5\%$ and length tolerance is $\pm 40\text{mm}$, unless otherwise agreed. ✓ Standard lengths; ○ Non-standard lengths (please ask Bencros).